

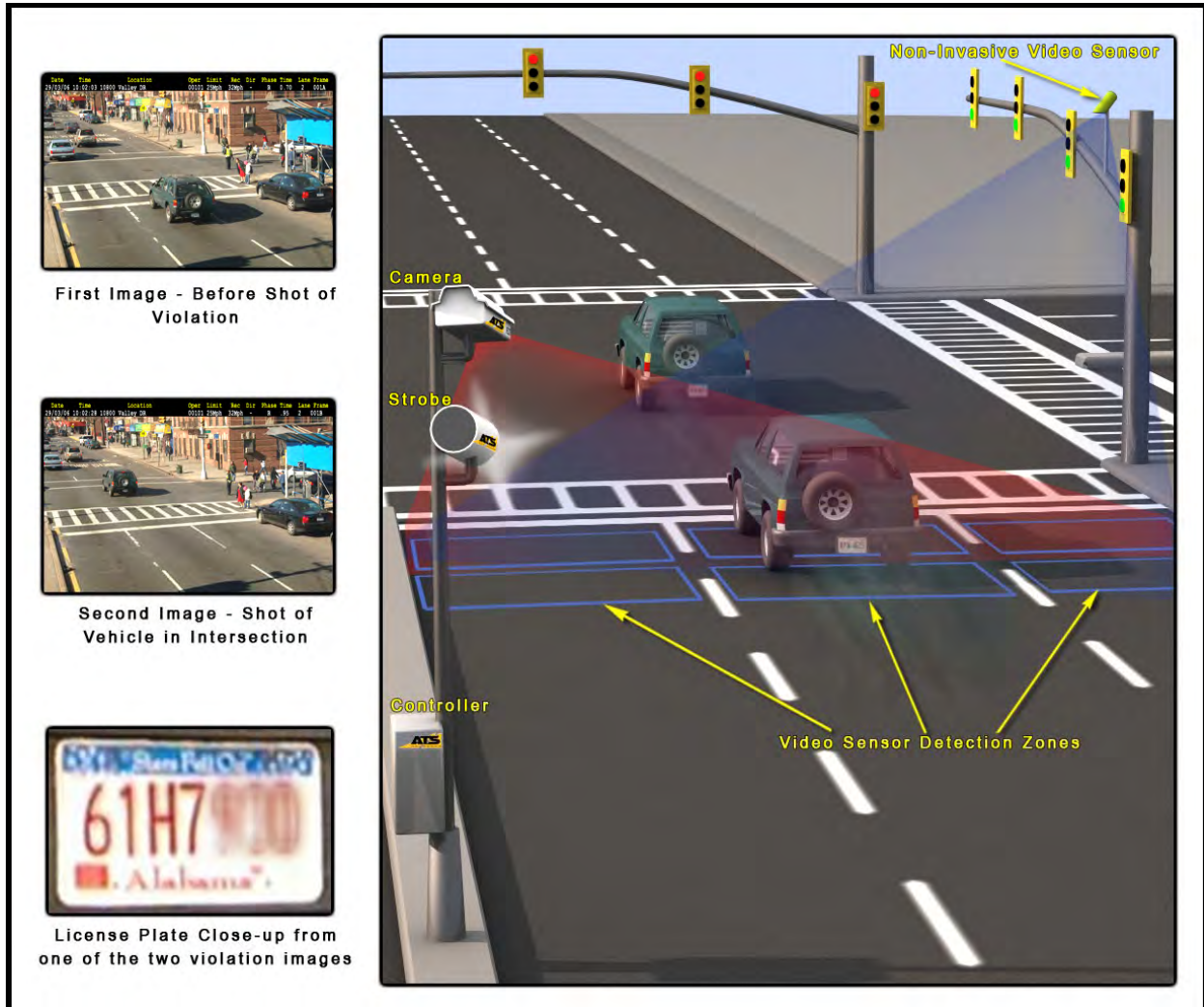
Red-light Safety Program FAQs

Why has the Village of Royal Palm Beach implemented a Photo Enforcement Program?

According to the Insurance Institute for Highway Safety, nearly 2 million crashes annually occur in intersections. In 2007, red-light running resulted in almost 900 fatalities and 153,000 injuries.

Red-light running is a problem. It is believed that an automated red-light camera program will reduce the number of red-light collisions and injuries associated with these crashes. The purpose of this program is to increase traffic safety in the Village of Royal Palm Beach. The goal of the program is to reduce red-light running violations, crashes, and injuries without impacting city funds.

How does the red-light camera work?



- The system activates when motion is detected just prior to the stop bar AFTER the traffic signal has turned red. The cameras capture two images of an alleged violation, taken from the rear of the vehicle.
- The first image shows the vehicle at the white stop bar and the illuminated red light.
- The second image shows the violator in the middle of the intersection with the red light illuminated.
- The license plate image is a close-up from one of the images captured.
- Data, including the time, date, and duration of the yellow and red lights, also is recorded.
- Cameras also record a 12-second digital video of the violation, including six seconds prior to and six seconds after running the red light.

Where are the red-light cameras located?

The intersections with camera installations are listed below. Each intersection is marked clearly with signs.

- Royal Palm Beach Blvd. at Okeechobee Blvd.
- Royal Palm Beach Blvd. at Crestwood Blvd

What is a red-light running violation?

A red-light running violation occurs when a motorist enters an intersection after the traffic signal has turned red. Motorists already in the intersection when the signal changes to red, waiting to turn for example, are not considered red-light violators.

Why does the camera flash when no one actually runs the red light?

The red-light camera system is designed to take two rear photographs of a vehicle that may be committing a violation. The first rear image captures the vehicle prior to entering the intersection with the traffic signal red, and the second image shows the vehicle continuing through the intersection during the red signal phase.

On occasion, a vehicle approaching an intersection with a red light may come to a stop before entering the intersection yet trigger the red-light camera system, causing the flash to discharge. In addition, a vehicle approaching the intersection and making a right turn may not come to a complete stop but only slow before continuing to turn, triggering the red-light camera system and causing the flash to discharge.

The Police Department reviews each violation event captured by the red-light camera system and makes the final decision to issue a citation. All flash incidents do not equate to a citation; however, the imaging results in 80%+ accuracy in identifying excessive speed approaches.